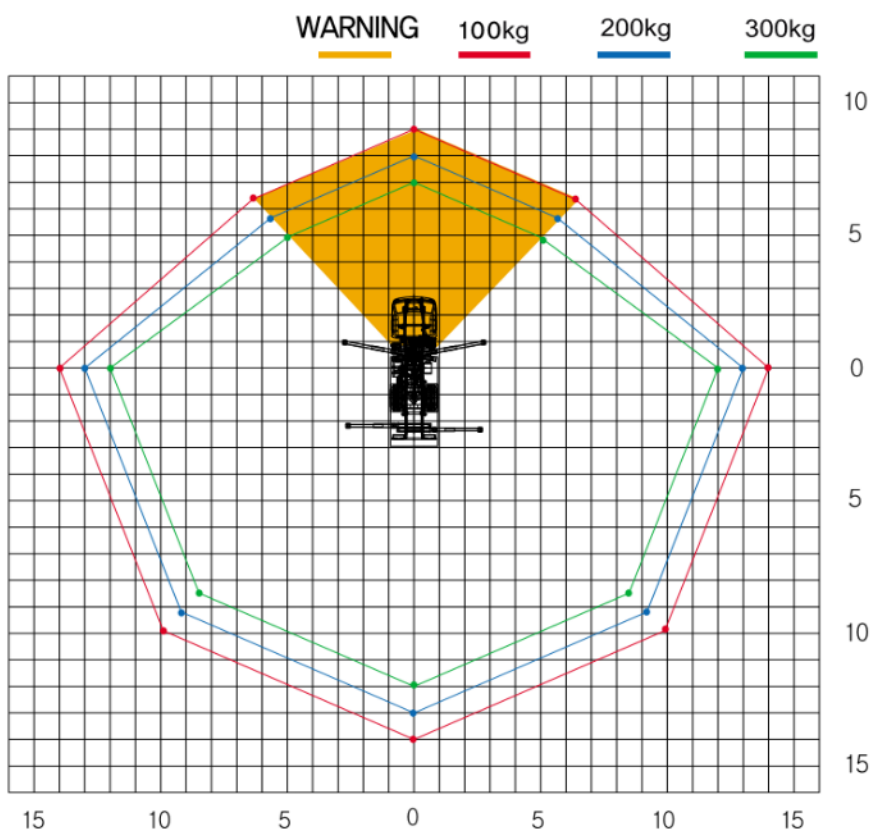
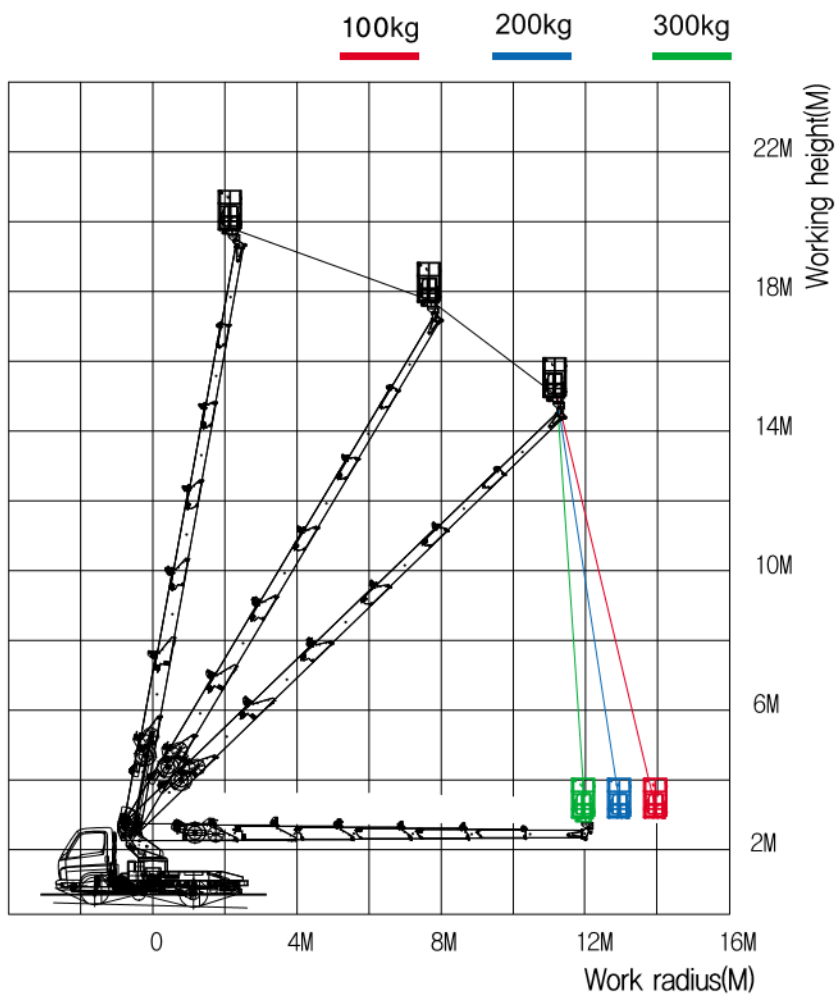


## HANSIN HS230



# Working Radius Diagram



## Specification table

ITEM		UNIT	HS230
Vehicle on board			Hyundai 2.5ton Short Body (EURO 6)
Features	Height	mm	2380
	Width	mm	1900
	Length	mm	5595
	Gross Weight	kg	6735
Boom	Stage		7 Stages
	Shape		Hexagon
	Withdrawal Type		Cylinder + Chain Link
	Quality of the material		DOMEX 700
Outrigger	Type		F : X TYPE / R : I TYPE / Automatic Hydraulic System
	Withdrawal Width	mm	F : 5500 / R : 5010
Work scope	Withdrawal Height	m	21.6 / BOOM ONLY 19.6
	Withdrawal Weight		2 persons or 300kg
Turning gear	Type		Hydraulic Reducer Motor (Mechanical reducer - Double Reducer) Type
	Turning angle		360°
Boarding Platform	Size		2650mm × 860mm × 1100mm
	Turning Type		Hydraulic Motor System
	Turning angle		360°
Controlling device	Outrigger		Lever Type
	Boom		Wireless Remote controller, Lever Type
Convenience Device			Night Search Working Light, Remote Ignition ON/OFF Device, Electric Accelerator, Automatic Hydraulic Oil Cooler, Tool Box
Safety Device			AML(Auto Moment Limit) Safety Device, Over Center Valve, Pilot Check Valve, Overload Protective Device, Over winding proof Device
Options			