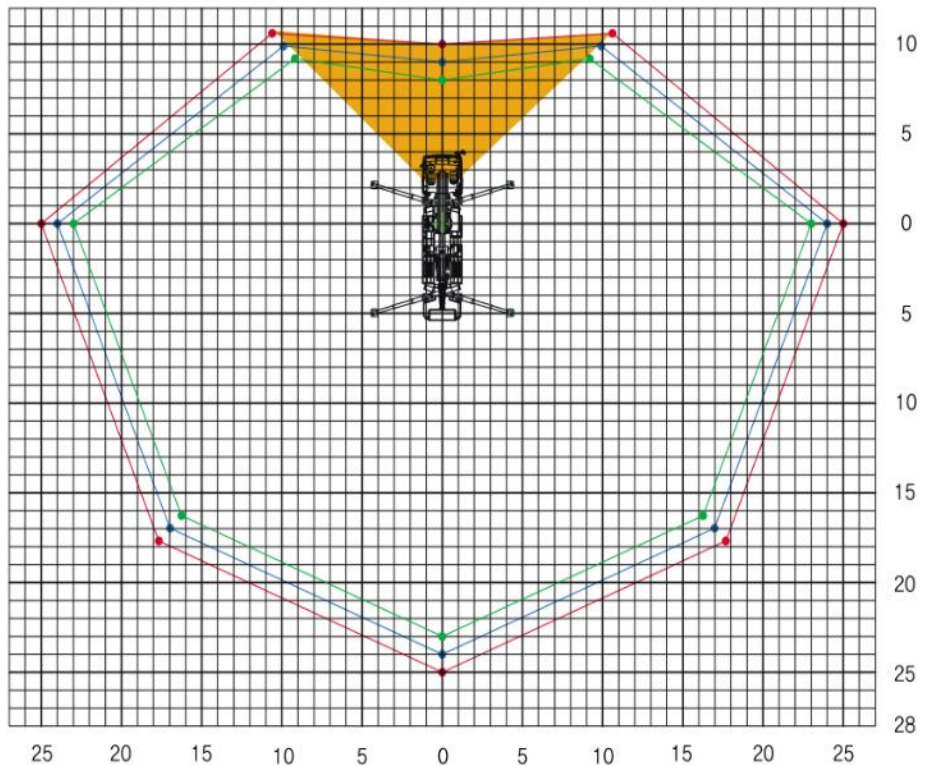
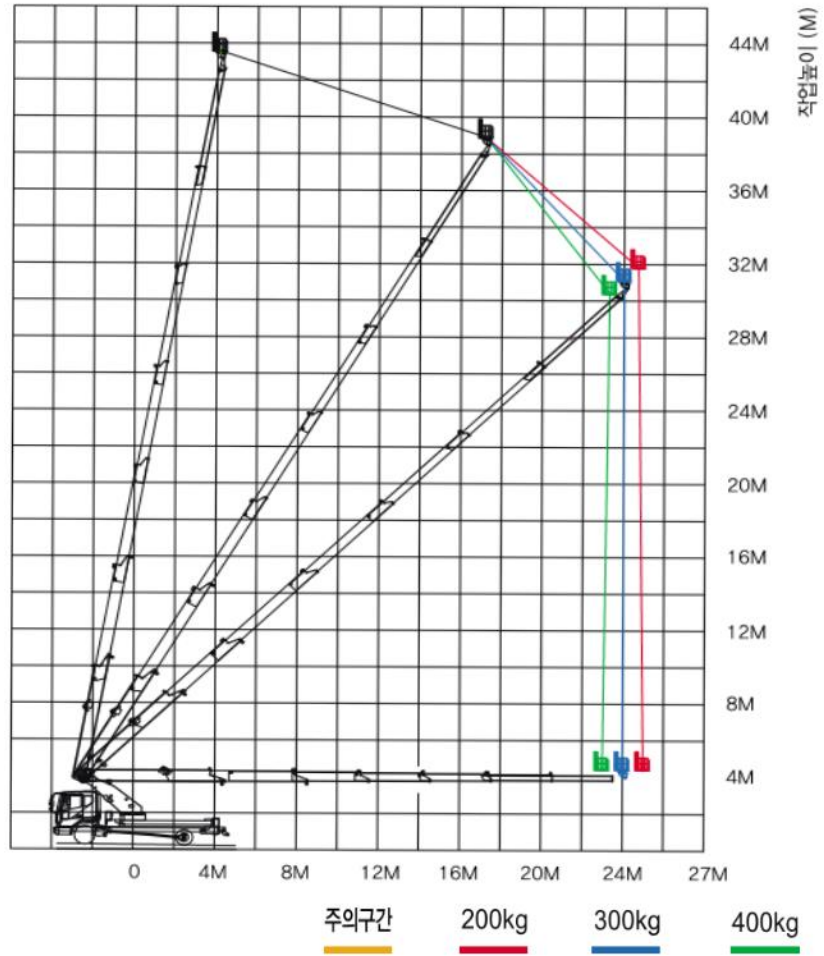


HANSIN HS450S



Working Radius Diagram

200kg 300kg 400kg



Specification table

ITEM		UNIT	HS450S
Vehicle on board			DAEWOO 5ton Ultra Long Body
Features	Height	mm	3900
	Width	mm	2495
	Length	mm	9440
	Gross Weight	kg	16220
Boom	Stage		7 Stages
	Shape		Octagon
	Withdrawal Type		1 to 7 stages concurrently operation
	Quality of the material		DOMEX 700
Outrigger	Type		X TYPE, Automatic Hydraulic
	Withdrawal Width	mm	F : 8750 / R : 8770
Work scope	Withdrawal Height	m	45 (Boom height : 42.7m)
	Withdrawal Weight		2 persons or 400kg
Turning gear	Type		Hydraulic Reducer Motor (Mechanical reducer - Double Reducer) Type
	Turning angle		Left and Right 360°
Boarding Platform	Size		3240 X 1050
	Turning Type		Hydraulic Motor System (Mechanical Reducer)
	Turning angle		Left and Right 2 Turns
Controlling device	Outrigger		Lever Type
	Boom		Wireless Remote controller
Convenience Device			Night Search Working Lights, Remote Ignition On/Off Device, Electric Accelerator, Tool Box
Safety Device			AML(Auto Moment Limit) Safety Device, Over Center Valve, Pilot Check Valve, Overload Protective Device, Over winding proof Device
Options			