

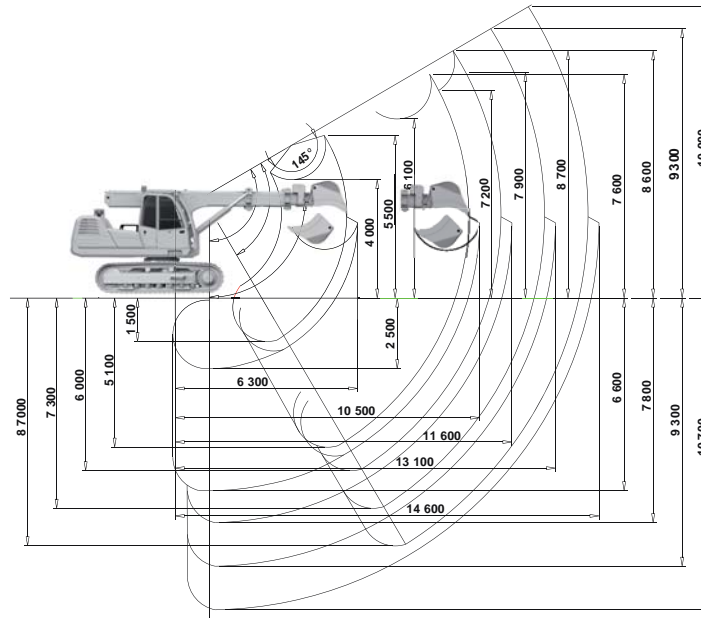
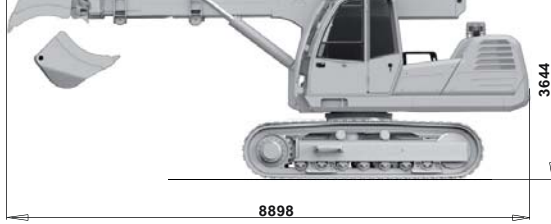


UDS 232

The multi-purpose finishing machine on wheel chassis that ensures perfect mobility and travel both on the road and on the terrain. The machine is suitable for precise finishing earthworks, in the final modifications in the contact of building site with the surrounding terrain. Thanks to the wide range of our additional attachments that allow that the machine can be used for various purposes. The machine is on a wheel chassis and is suitable for the forest, respectively finds its use in mining, extraction or petroleum industry, or at finishing earthworks.

Advantages of the machine:

- » **Machine versatility thanks to additional attachments**
- » **Long working range up to 14.6 m**
- » **Deep countermine up to 90°**
- » **The tool can be rotated in the full 360° range**
- » **Wide variability of the machine thanks to additional and attachment devices**



Technical specifications

Weights and loads

Machine operating weight	17 300 kg ± 3%	Force during telescope extension	78 kNS
Front axle load	79 kN	Force during telescope retraction	68 kN
Rear axle load	99 kN	Rotation time of the superstructure by 360°	7,5 sec
Max. pulling force	100 kN	Rotation time of the tool by 360°	3,0 sec
		Auxiliary hydraulics - flow rate	210 l/min, pri 150 bar

Driving features

Steering axle	CARRARO ALPP 125
Max. transport speed	20 km/h
Front approach angle	26 °
Rear overhang angle	20 °
Longitudinal crossing angle	146 °
Lateral crossing angle	125 °

Engine / JOHN DEERE 4045 HF C04

Number of cylinders	4
Volume	4,5 dm ³
Compression rate	17,0:1
Fuel consumption at work	219 ± 2,5% g/kWh
Output at rated revolutions	2 200 ot/min 93 +5% kW

Working parameters

Maximum total excavating force from thrust and retraction of the boom	85 kN
---	-------

Downforce on the quick coupler:

» retracted telescope	60 kN
» extended telescope	40 kN
» with 1,5 m extension arm	35 kN
» with 3 m extension arm	30 kN
» with 4,5 m extension arm	27 kN
Tilting moment on the quick coupler	58 kNm
Max. Superstructure revolutions	8 ot./min
Max. Tool revolutions	20 ot./min
Conversion of the rotating head	1:37
Reduced moment on the tool axis rotation	5,5 kNm

Hydraulic system

Travel / BOSH REXROTH A6VM140HA1R2
Working hydraulics / BOSH REXROTH A8V0140LAKH3

Electrical installation

Voltage of electrical equipment	24V
Ground pole	negative
Batteries 2, connected in series	6T 175 Ah

UDS 232

Wheel dual assembly	10,00-20 16 PR
Wheel disk	7,5 x 20